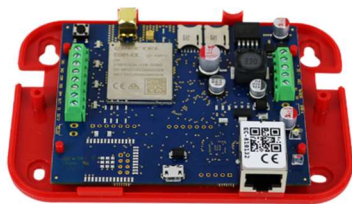


# EniCom

## Security and Fire Communicator



**EniCom 2G**



**EniCom 4G**



**EniCom 4G Pro**

**CLOUD functions**

Content

**Simple registration for cloud access..... 3**

**Register on the website..... 3**

**Cloud Manager application access..... 3**

**EniCom on the website [www.ascloudmanager.com](http://www.ascloudmanager.com) ..... 4**

**Device status..... 4**

**Add notofications..... 4**

**Add an managing users ..... 5**

**Create new user ..... 6**

**Create URL control icon ..... 7**

**Event list ..... 8**

**Settings..... 8**

**Information..... 8**

**IO List ..... 8**

**Help ..... 8**

## EniCom cloud options

EniCom modules **have automatic cloud connection**, so upon first installation, we can immediately register with our own access to cloud control. **Before registering**, please **configure the module's inputs and outputs** with the EniCom Tools software so that they are available in the cloud when using the application.

### Simple registration for cloud access

- Unpack the module
  - Connect the Ethernet connector for network access
  - Connect the 12VDC voltage required for the module to operate
- The module is ready for cloud registration

### Register on the website

- Open the [www.ascloudmanager.com](http://www.ascloudmanager.com) website and create an account.
- Enter your email address and password, then your name.
- Country setting (for setting module parameters)
- Select native language
- Setting the website language
- Enter title (Installer / End User / Remote Monitoring)
- Check the **"I'm not a robot"** box and click the Register button.
- Once on the website, click on the **"Tools"** menu and add our EniCom module to our account using the **"Add registered device to user"** button.
- Enter a name for the installation location for easier identification
- If you already have multiple devices, you can assign your new device to "Mounting locations"
- In the **"New module MAC/IMEI address"** line, enter the MAC number of the new EniCom module and press the **"Save"** button.

**After successful registration**, our EniCom module will appear in the "Tools" list and be available.

### Configuring EniCom module for output control

Please configure the module's inputs and outputs with the EniCom Tools software to make them available in the cloud.

### Cloud Manager application access

- Show device properties
- Device output control

Device status feedback

To control from the app, download the **Cloud Manager** application.

Apple Store  
[Download](#)



Play Store  
[Download](#)



### Output Control - Create a control icon in an application






Make sure you are logged in to the Cloud Manager app with your registered email address. In the Tools menu, a check mark or a cross at the top of the screen indicates that you are logged in. If you are not there, click the login button and enter your email address and associated password (which you used to register the product).

1. Select the device you want to control in the **Devices** list.
2. At the bottom of the window that opens, in the Create icon line, click the „>“ sign.
3. Press the “+” sign in the upper right corner
4. Select the cloud icon to create the control button.
5. Name the control icon (e.g.: Holiday home heating, Home gate, Lighting)
6. Select the background color and icon for the control icon.
7. Select between the outputs, then set the output type (monostable/ON/OFF), in case of monostable the output control time. (1-65535sec)




By clicking the Save button, the control icon is created, available on the Control Panel in the main menu, and ready to use.

EniCom on the website [www.ascloudmanager.com](http://www.ascloudmanager.com)

Helyszín	Tipus	Azonosító	Utolsó bejelentkezés időpontja	Állapot	Műveletek
EniCom 2G Teszt 2024.03.08.	ENICOM 2G 1.08	BC889381035A;866562063621991;EC-S2RNB22-81035A96	2024.03.08. 14:49:37	Online	  

### Device status

You can view the current status of the outputs or inputs of your device.

Helyszín	Tipus	Azonosító	Utolsó bejelentkezés időpontja	Állapot	Műveletek
EniCom TECH	ENICOM 2G 1.08	BC889381035A;866562063621991;EC-S2RNB22-81035A96	2024.03.08. 14:49:37	Online	  

Green indicates the cloud connection status of our registered device.

The device is ONLINE



Green means dormancy. Approaching your cursor displays the name you entered. If the color changes to red, you will see an "Offline" message. The device is OFFLINE.

You can monitor output or input signal states on your device.

Mobile network signal strength

INPUT (IN- / IN +) at rest (no DC voltage at terminals)  
OUTPUT at rest (C / NC short circuit, C / NO open)

INPUT signal change (DC voltage at IN- / IN + terminals)

OUTPUT activated (C/NC open, C/NO short circuit)

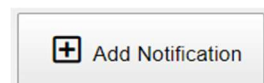
### Notifications

There are two types of notifications:

- **system notifications**, which usually contain important messages about the server, development, or any system
- **status notifications**, where we receive e-mail notifications about the controls and conditions we have selected to the e-mail address we have also chosen.

### Add notifications

Push the „Add notification” button



#### Local signal

You can select the output or input of the MultiOne GSM module depending on which one changes you want to be notified about.

**Types** you can specify the direction of the output change

OFF->ON Send a notification when turned ON

ON->OFF Send a notification when turned OFF

#### Notified e-mail address

Select the e-mail address to which you want to send the notification. You can also personalize the message and subject field.

#### NOTE!

Depending on the user and e-mail address with which the module is registered, you may not see an e-mail address or the e-mail address to which you want to be notified. In this case, select the desired e-mail address from the Users menu and add the one to be notified for e-mail setup. After saving, log out and log back in at [www.ascloudmanager.com](http://www.ascloudmanager.com).

Continue setting the notification to the desired email address.

In the **Panel signals** field, we can select which of the Contact ID signals from the alarm center we would like to receive a notification upon arrival.

**Select type**, based on the status of the incoming signal, you can choose:

**ALARM**

Sends a notification when a Contact ID event arrives.

**RESET**

Sends notification when Contact ID event is restored

**Notify e-mail:** select the email address for the notification will be sent. You can also customize the message and subject fields.

**To send a push message**, under the available devices, we can select the mobile devices with which we have already logged into the Cloud Manager application to access

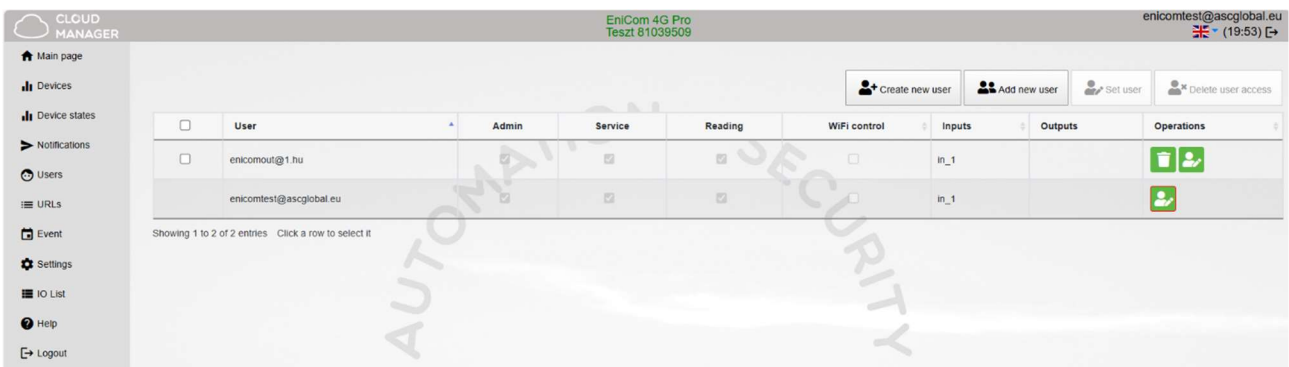
our device. Each time we log in, the server identifies the mobile device and it appears in the selectable list. We can test the Push message sending by pressing the Test button.

**IMPORTANT!**

Depending on the user and email address with which the module was registered, you may not see an email address here or you may not see the email address for which you want to set up notifications. In this case, select the desired email address in the Users menu, then add it to the email settings to be notified with the + sign. After saving, exiting [www.ascloudmanager.com](http://www.ascloudmanager.com) and returning, you can continue setting up notifications to the desired email address.

**Add an managing users**

After registration, the e-mail address provided during registration will be displayed in the device. (admin email address)

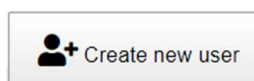


**NOTES!**

**If you delete this email address from the list of users, we will not see the device the next time you log in!**

If no users are saved to the device, the device will be automatically deleted from the database in a few days.

**You can assign users to your device** by entering a user email and password, you can make personal privileges to them.



The **number of users is unlimited**, so you can give access as you wish by entering an email address. Each user can control the output of the MultiOne GSM module with privileges e-mail address.

## Create new user

To create a new user, you may want to enter a daily email address to be notified of the status change. You can enable or restrict notifications. We have the ability to specify the language used to log in, so all users can easily and conveniently manage the device.

- User:** login email address to [www.ascloudmanager.com](http://www.ascloudmanager.com) website
- Password:** new user login password
- Password again:** password confirmation
- Contact name:** name for email address (fr identification, greeting)
- Email of contact person:** You can receive notifications at the user's notification email address. If you do not want to be notified, select "I do not want to be notified".
- Residence (country):** Select the country where you live
- Preferred language (native):** Select your native language
- Webpage language:** Select the language of the website. When opened, all functions can be read in this language. Our service is constantly expanding, currently available in 5 languages. The language of the page can be changed after logging in.
- Role:** Select you user status (Enduser, Installer)

Give additional users access. You can give users individual permissions.

## Add more users

Add new user ✕

User:

Password:

General

Admin

Service

Reading

WiFi control

Status

Outputs

out1

Cancel
Save

**User:** new user email address

**Password:** new user login password

**Admin:** Administrator access

You have all permissions except to delete the user who created the permission.

**Service:** Reading permission, allows access to service data related to the operation of the module.

**Reading:** Reading permission

**WiFi control:** With this function, we can enable or disable the EniCom module's cloud access. If checked, the given email address will not be able to access the cloud services, and in some cases, it will not be able to control the output preset in the application.

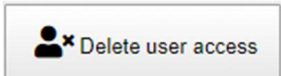
**out1:** Assign user output to control.

After saving, the settings can be used immediately.

## Modify user information

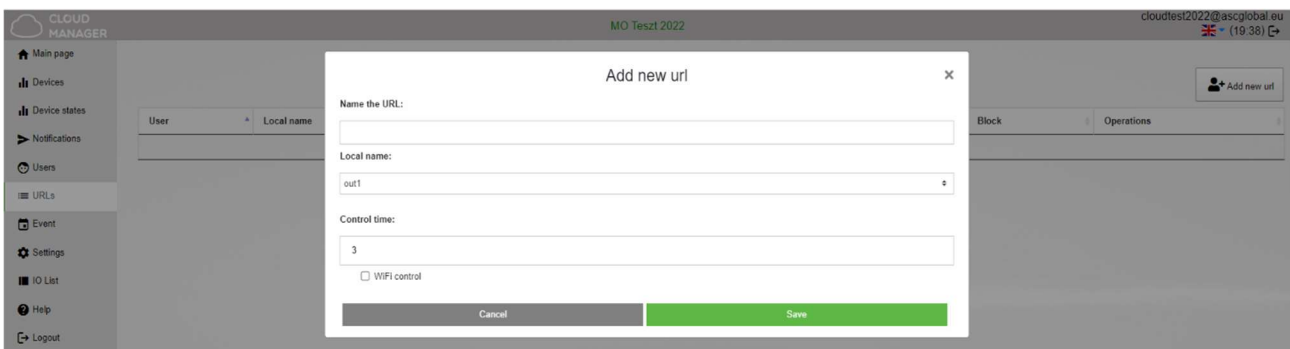


By clicking on the "Set user" button, all user data can be changed. You can change your own or other users' login passwords. If you no longer need access, you can delete it.



### NOTE!

Just as we have created a user, we can delete it. Pay special attention to deleting the email address created as an admin from the users queue, no longer seeing the device the next time you log in, and if no users have been saved to the device, the device will be automatically deleted from the database.



## Create URL control icon

In URL menu, you can use the "Add new URL" button to create a control icon for your desktop PC or laptop. Name the control icon that can be controlled from the PC.

Drag to the screen with the left mouse button and the URL will already operate the device connected to the output.

User	Local name	Link	Control time	WiFi control	Block	Operations
test924@ascglobal.eu		Door open PC button	0	<input type="checkbox"/>	<input type="checkbox"/>	

You can edit your existing URL connection. You can change your settings or disable them.

If you no longer want to use it, simply delete it with the appropriate symbol.



## Event list

In the event log, you can list the user activity used with the Internet connection. We can list when and which user controlled the output. You can save the event



log to an Excel file.

Timestamp	User	Output	Event
2022-02-08 14:07:04	cloudtest2022@ascglobal.eu	out1	Command sent / Command executed: 213.178.106.114
2022-02-08 14:06:49	cloudtest2022@ascglobal.eu	out1	Command sent / Command executed: 213.178.106.114
2022-02-03 13:47:31	cloudtest2022@ascglobal.eu	out1	Command sent / Command was not executed: 213.178.106.114
2022-02-03 13:47:23	cloudtest2022@ascglobal.eu	out1	Command sent / Command executed: 213.178.106.114
2022-02-03 13:45:00	cloudtest2022@ascglobal.eu	out1	Command sent / Command was not executed: 213.178.106.114
2022-02-03 13:44:27	cloudtest2022@ascglobal.eu	out1	Command sent / Command was not executed: 213.178.106.114
2022-02-03 13:38:49	cloudtest2022@ascglobal.eu	out1	Command sent / Command executed: 213.178.106.114
2022-02-03 10:50:17	cloudtest2022@ascglobal.eu	out1	Command sent / Command was not executed: 213.178.106.114
2022-02-03 10:24:42	cloudtest2022@ascglobal.eu	out1	Command sent / Command was not executed: 213.178.106.114

## Settings

You will receive information about your device in the settings menu.

## Information

In this menu you will receive information about your device depending on your authorization.

Information	
Title:	EniCom 4G Pro TESZT
MAC:	BC8893810399
IMEI number:	860264052865145
Serial number:	EC-S4WNC04-810399E2
Date of creation:	2024. 02. 26. 13:34:10
Last client login date:	2024. 02. 26. 13:34:00
Date of last issued command:	2025. 04. 03. 15:56:01

- Title:** device name
- MAC:** MAC identifier
- IMEI:** IMEI identifier of the device
- Serial number:** unique serial number of differentiated devices - this is not the case with MultiOne GSM
- Date of creation:** date of registration
- Last client login date:** last login date
- Date of last issued command:** date of last output control

## IO List

In the IO list we can change the output and input names, we can control the output and we can specify the output opening time in seconds. Maximum time that can be set: 65,535 seconds. This menu item can be used to control multi-output devices and IP modules.

## Help

Help is available in the form of a video. Our videos are constantly being updated and expanded.

